



**ADVANCED** MADE SIMPLE FOR YOU



Advanced  
Productivity

Advanced Workflow  
and Mobility

Advanced  
Image Quality

Advanced  
Media Support



# ADVANCE YOUR BUSINESS PERFORMANCE



The imageRUNNER ADVANCE C3300 series is a full-colour A3 multifunctional device with advanced print, copy, scan and fax capabilities designed with your enterprise in mind. Impress your clients with vivid, vibrant, high quality prints, and boost your workgroup productivity through high print speed and seamless connectivity.

This new series brings you greater convenience and usability through new innovations. You will find walkthrough videos, paper size detection and multitasking features. Other touches include Reminder LED and a redesigned paper cassette tray for better ergonomics. There is even an option for Staple-on-Demand, and the ability to print documents with ECO-Staple binding.

If you are looking for a simple way to advance your business performance – you will find it in the imageRUNNER ADVANCE C3300 series.

# ADVANCED USABILITY AND CONVENIENCE

effortless operation through greater convenience



## INTUITIVE CONTROL CONSOLE



imageRUNNER ADVANCE C3300 series comes with a full coloured 7" WVGA touch panel that is very easy to use. The vari-angle screen allows your staff greater accessibility from a variety of angles. You can also customise functions into shortcuts on the menu bar.



## CONFIGURABLE QUICK MENU

The configurable Quick Menu lets you run complex, multi-step tasks with the touch of a single button. Frequently used destinations and function settings can also be registered and re-used easily.



## READY FOR PRODUCTIVITY

The imageRUNNER ADVANCE C3300 series switches from energy-saving Sleep Mode to full powered productivity in an instant. Simply place your document on the automatic document feeder or multipurpose tray and the device is ready to go.



## EASY RELOADING AND REPLACEMENT

Enjoy greater uptime with consumables replacement walkthrough videos which are shown upon low consumables notification (e.g. toner replacement). Users can easily understand the steps needed, reducing time and effort required.

In addition, the redesigned paper cassette tray takes just one step for withdrawal. It even features a soft closing mechanism for greater durability and user experience.



## CONVENIENT PRINT AND SECURITY

The imageRUNNER ADVANCE C3300 series comes with standard USB ports that allow you to print directly from or scan and store to your USB Memory media. You may also choose to install the optional ID Card Reader for easy and secure authentication.

*\* Optional Direct Print Kit or Adobe® PostScript® 3™ is required to print PDF. USB Device Port required for installation of optional ID Card Reader.*

## REMOTE OPERATION SOFTWARE

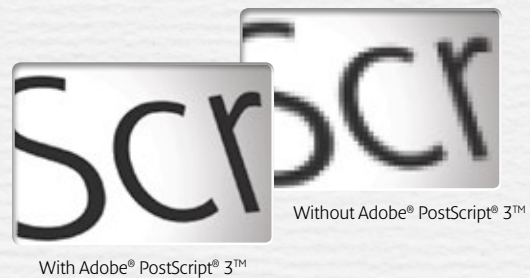
Take full control of your device functions remotely from the convenience of your desk without any optional accessory. Available on Windows based PCs, you can use the on-screen operation panel emulation to operate the imageRUNNER ADVANCE device. This is particularly useful for network administrators and users with accessibility needs.

# ADVANCED PRINT QUALITY

print performance that shows

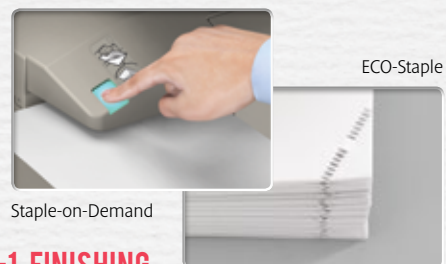
## VIVID AND VIBRANT COLOUR PRINTS **V<sup>2</sup> COLOUR**

The imageRUNNER ADVANCE C3300 series employs newly developed combination of density fine adjustment, automatic gradient control and colour range control to give you vivid, vibrant images.



## RELIABLE PRINT PERFORMANCE

Canon's UFR II print technology employs load balancing to enhance the speed and performance of print jobs. PCL 5c/6 and Adobe® PostScript® 3™ are also available as options. Genuine Adobe® PostScript® 3™ enables crisp output quality without worrying about font compatibility. With this capability, you will also have smoother print workflows, direct PDF print and full support for Adobe fonts.



## 3-IN-1 FINISHING

The optional Inner Finisher adds a 50-sheet stapling capability without adding to the device's compact footprint. Enjoy added convenience with the Staple-on-Demand feature where users can re-staple documents on the spot after scan or copy tasks. Users can bind print or copy documents with the ECO-Staple, which is environmentally friendly and hassle-free.

## INTELLIGENT MULTIPURPOSE TRAY

Place documents of any size on the multipurpose tray and it will automatically detect the relevant paper sizing, saving time, paper resource and effort.



# ADVANCED PRODUCTIVITY

work efficiency that is simply enterprising

## CONCURRENT TASKS CAPABILITY

The imageRUNNER ADVANCE C3300 series is not only multifunctional – it is also a multi-tasker. Users can perform various tasks at the same time, such as scanning when another user is printing, even before the device finishes sending e-documents.

## SUPER G3 FAX FUNCTIONALITY

Upgrade with the Super G3 fax option to add high-speed, reliable fax functions on your imageRUNNER ADVANCE C3300 series. Users can preview fax content before printing or sending, saving precious time and paper. You can also enable automatic forwarding based on specific conditions to transmit to any destination.

For organisations with existing fax-enabled imageRUNNER ADVANCE systems within the network, you can leverage the fax function with the economical Remote Fax Kit to realise greater cost savings.

# ADVANCED WORKFLOW

optimizing the way you work

## ADVANCE INNOVATED SERVICE OPERATION

As part of our service evolution, Canon is moving to the next phase of advanced service standards. This initiative is known as Advance Innovated Service Operation (AISO). From the design of the device to process optimisation and day-to-day operational concerns, we have improved every aspect to help you save cost, time, and resources.

One of these key drivers is eMaintenance - a simple yet powerful service that eases your administrative burdens dramatically. You can automate your fleet maintenance tasks, improve consumables management, and gain better control of all your networked Canon printing devices.

With the remote operation software, users' issues can be resolved in a timely, accurate and effective manner — even before we step into your office.

## MAILBOX SIMPLE

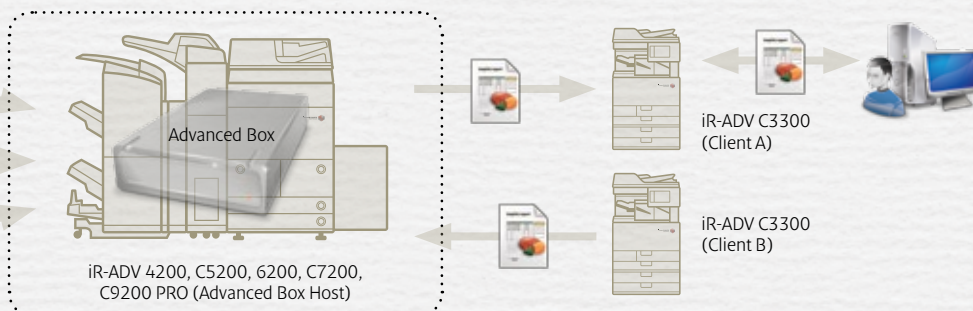
The imageRUNNER ADVANCE C3300 series comes with an in-built Mailbox Simple that allows storage on the device itself. Users can scan and store files directly, or retrieve stored data for printing.



## ADVANCED BOX COLLABORATION

When acting as a client device, the imageRUNNER ADVANCE C3300 series can save, preview, rename, or print files stored in the Advanced Box of higher-end imageRUNNER ADVANCE devices\* within the same network. Alternatively, you can access files on a shared folder through a PC. For confidential documents, encrypted personal folders can be created.

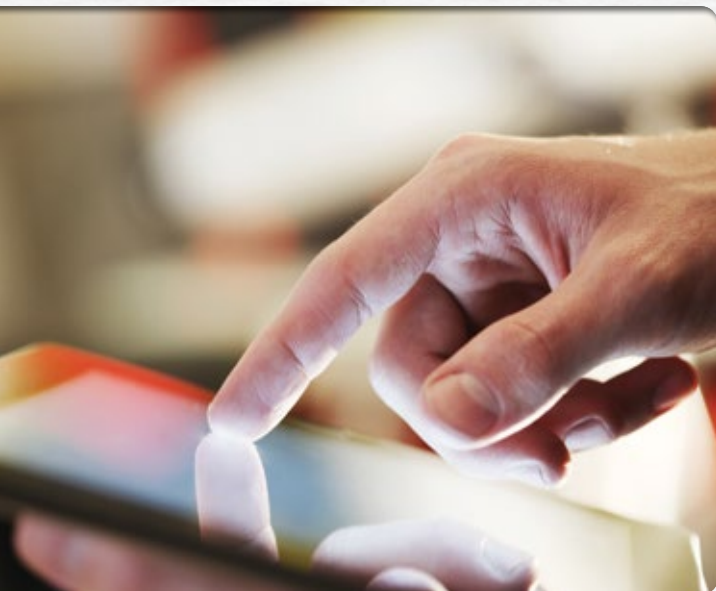
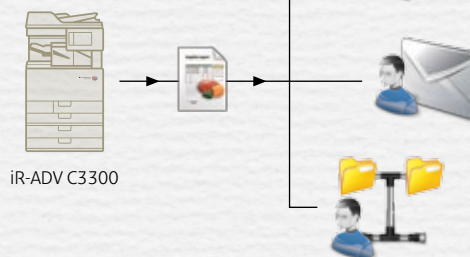
\* Requires connection to imageRUNNER ADVANCE with in-built Advanced Box function.



Send or retrieve files through your imageRUNNER ADVANCE C3300 series when connected to the same network with higher-end imageRUNNER ADVANCE models with the Advanced Box feature.

## UNIVERSAL SEND

Simplify your document workflow with Canon's proprietary Universal Send technology, which enables you to scan and disseminate documents to a multitude of destinations concurrently in a single operation. This reduces repetitive work when sending the same document to different destinations.



## MOBILE PRINTING AND SCANNING

For users on the go, the versatile imageRUNNER ADVANCE C3300 series provides simple mobile print functionality from their device with the Canon Mobile Printing. It supports a wide variety of formats including image, photo, PDF files and web pages. Mobile users can also use the Canon Mobile Scanning for Business to scan and save data on their mobile devices, upload it to cloud storage services and send it as e-mail attachments to themselves.

\* Canon Mobile Printing, Canon Mobile Scanning applications and Canon Print Service (Android-only plug-in) can be downloaded on Apple or Android devices.



# ADVANCED SOLUTIONS

solutions for today's business challenges

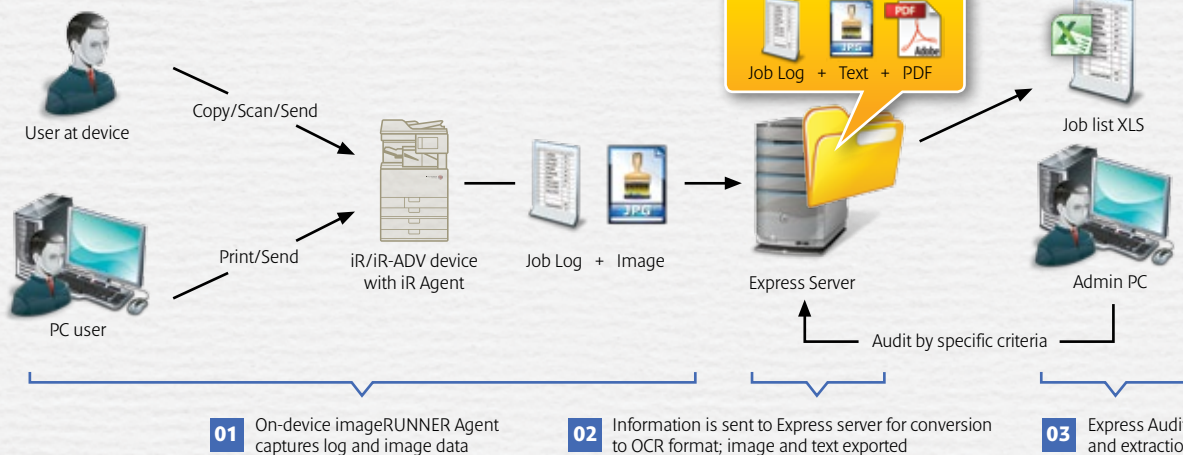


## UNIVERSAL LOGIN MANAGER

Easy to implement and use, this is a server-less solution that provides users with a personalised login experience. IT administrators will find that the Universal Login Manager is a useful tracking tool to access print and copy usage. It can also be upgraded to uniFLOW for more advanced features.

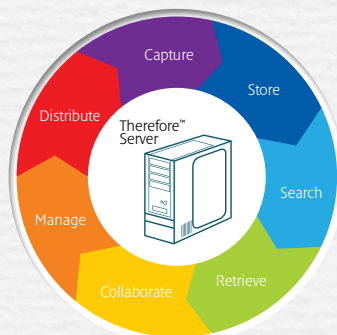
## iW SECURE AUDIT MANAGER EXPRESS

Oversee and safeguard the distribution of your organisation's documents. Protect against potential espionage by logging text and image data with this real-time security solution.



# ENTERPRISE DOCUMENT MANAGEMENT SOLUTIONS

Complement your imageRUNNER ADVANCE C3300 series with various enterprise document and output solutions to realise the full potential of your fleet. Here are some notable highlights.



## THEREFORE

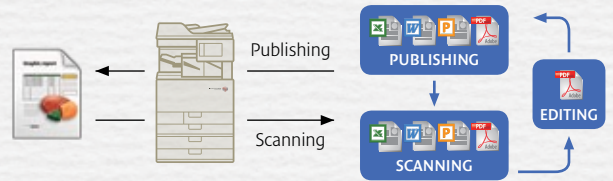
Therefore™ is a premium information management system for enterprises created to manage all types of information. It allows you to capture, organise and secure access to important information for all your users. End users and administrator alike will appreciate the intuitive user interface, flexible workflow annotations, electronic signatures, easy integration and a high powered search engine.

## eCOPY SHARESCAN

Digitise your paper-based data into electronic workflows with this comprehensive suite. Scan, extract, classify, index and convert from the multifunctional device and send directly to selected electronic destinations.

# MEAP PLATFORM

Manage your workflow easily and effectively with Canon's Multifunctional Embedded Application Platform (MEAP) designed to offer greater flexibility and adaptability to meet your individual needs. Pair your imageRUNNER ADVANCE C3300 series with a selection of software solutions compatible with MEAP to bring your business to the next level.



## iW DESKTOP

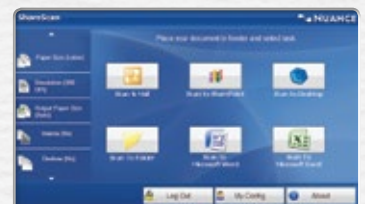
iW Desktop is a powerful PC-based solution designed with efficiency in mind. The software's live view shows you exactly what will be published, while the intuitive controls allow you to perform essential tasks with complete ease. It fully supports your organisation's document cycle from gathering information to publishing and storage, with each step flowing into the next effortlessly.

- Efficiently notifies fax reception and sends fax documents.
- Enables integrated management by editing and processing various electronic and paper documents.
- Reduces costs of document outputs.
- Implements seamless digitisation of documents with familiar operations.
- Achieves an approval flow with electronic documents easily.
- Enables sharing and central management of office documents.

## uniFLOW



Save time and money for your organisation's with this smart output management solution that provides effective control over your entire fleet. With its modular design, uniFLOW can be customised to fit the unique needs of your organisation. uniFLOW offers an array of benefits from full accounting and reporting, follow me printing, job routing to cost management and even document capture.



# ADVANCED SECURITY AND MANAGEMENT

device and software security solutions that protect your business

## DEVICE SECURITY

Designed to enhance the security level of your imageRUNNER ADVANCE C3300 series, device authentication system are in place to manage users access through User Authentication or the optional Universal Login Manager. You can perform more detailed user management such as limiting the functions available for each user. In addition, users can register both characters or numeric IDs and passwords, allowing greater personalisation.

If you are looking for a holistic security and cost-saving measure, the optional Access Management System is your answer. This system allows you to configure each user's access rights on a per feature basis to prevent unauthorised distribution and information leakage.

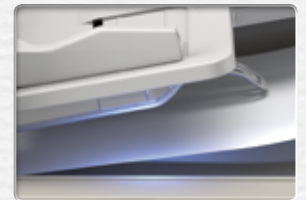
## DATA SECURITY

The imageRUNNER ADVANCE C3300 series offers HDD Data Erase as a standard feature, enabling a safer automatic removal of sensitive data upon job completion. To enhance the level of security of your stored data in the hard disk, invest in the additional HDD Data Encryption Kit that automatically encrypts all stored data and saves the encryption keys separately from the data.

## DOCUMENT SECURITY

The security of your confidential documents should never be overlooked. For added protection, Encrypted Print Software is available as an option. This encrypts the print data not only during transmission, but also while it is residing within the print queue. Users are required to authenticate themselves in order to decrypt and print the file at the device.

The feeder tray is partially transparent, allowing users to see uncollected documents. As an added precaution, the Reminder LED illuminates during operation and blinks on job completion. This provides a visual reminder to collect documents and help prevent information leak.



## MANAGED DOCUMENT SERVICES

Canon offers a unified consultancy service for holistic document solution management. Our experienced consultants employ proven methodology to help you reduce cost, improve serviceability, and optimise business processes.

# ADVANCED RESPONSIBILITY

Doing more for our environment



## ENVIRONMENTALLY RESPONSIBLE

Every imageRUNNER ADVANCE is partially built from recycled plastics and bioplastics, and subject to strict environmental standards.

## IT'S TIME TO SAVE

Setting an automatic power down schedule for devices based on actual usage helps save energy especially after office hours and non-work days.

## LOWER TOTAL ELECTRICITY CONSUMPTION

imageRUNNER ADVANCE devices consume less electricity. Doing this not only saves on the energy bills, it reduces CO<sup>2</sup> emissions that damage our environment.

## SETTING THE RIGHT TONE

Our new Insulated & Air Pressure (IAP) toner bottle uses less material compared to previous designs, therefore reducing wastage.

## SPECIFICATIONS imageRUNNER ADVANCE C3330/C3325/C3320 Series

|                               |  |  |  |
|-------------------------------|--|--|--|
| Type                          | Colour Laser Multifunctional Device (Reader / Printer Desktop)                         |  |  |
| Maximum Original Size         | A3   |  |  |
| Paper Sizes                   | Cassette 1   | A4, B5, A5, Custom size (139.7 x 182 mm to 297 x 215.9 mm)   |  |
|                               | Cassette 2   | A3, B4, A4, A4R, B5, B5R, A5R, FL5, F4A and Custom size (139.7 mm x 182 mm to 304.8 mm x 457.2 mm) and Envelopes (COM10 No.10, Monarch, DL)        |  |
| Resolution                    | Multi Purpose Tray   | A3, B4, A4, A4R, B5, B5R, A5, A5R, FL5, F4A Custom size (98.4 mm x 139.7 mm to 320 mm x 457.2 mm) and Envelopes (COM10 No.10, Monarch, DL, ISO-C5) |  |
|                               | Scan   | 600 x 600 dpi  |  |
| Copy / Print Speed            | Copy   | 600 x 600 dpi  |  |
|                               | Print  | 1200 x 1200 dpi  |  |
| First Copy Time               | Full Colour  | 8.2 seconds  |  |
|                               | Monochrome   | 5.9 seconds  |  |
| Warm-Up Time                  | From Power On w/o Quick Startup  | 34 seconds or less   |  |
|                               | From Power On w/Quick Startup  | 10 seconds or less   |  |
| Multiple Copies / Prints      | 1 to 999 copies  |  |  |
| Magnification                 | Copy Ratio   | 25 - 400%  |  |
| Paper Weight                  | Cassette   | 52 to 220 gsm  |  |
|                               | Multi Purpose Tray   | 52 to 256 gsm  |  |
| Paper Capacity                | Cassette 1, 2  | 550 sheets x 2 cassettes (80 gsm)  |  |
|                               | Multi Purpose Tray   | 100 sheets (80 gsm)  |  |
| CPU                           | 1.66GHz  |  |  |
| Memory                        | 2 GB RAM   |  |  |
| Hard Disk Drive               | 250 GB   |  |  |
| Interface                     | Network  | Ethernet 10Base-T / 100Base-TX / 1000Base-T (RJ-45)  |  |
|                               | Others   | USB 2.0 x 2 (Host), USB 2.0 (Device)   |  |
| Power Supply                  | 220-240V AC, 50/60Hz, 4.0A   |  |  |
| Power Consumption             | Max.   | 1.5kW or less  |  |
|                               | Sleep Mode   | 0.8W or less   |  |
| Toner Yield (A4, 5% coverage) | Black  | 36,000   |  |
|                               | Yellow / Magenta / Cyan  | 19,000   |  |
| Drum Yield                    | Black  | C3320: 69,000   C3325: 78,000   C3330: 84,000  |  |
|                               | Colour - Y, M, C   | C3320: 54,000   C3325: 61,000   C3330: 66,000  |  |
| Dimensions (H x W x D)        | 1,129 mm x 565 mm x 693 mm (when the DADF-AQ1 and CFU-AL1 is attached)                 |  |  |
| Weight                        | Approximately 63.2 kg  |  |  |
| Installation Space (W x D)    | 894 mm x 693 mm (when the DADF-AQ1 is attached and the multi-purpose tray is extended) |  |  |

### Print Specifications

|                  |   |   |  |
|------------------|---|---|--|
| PDL              | UFR II (Standard), PCL5c/6 (Optional), Adobe PostScript 3 (Optional)  |   |  |
| Resolution       | 1200 dpi x 1200 dpi   |   |  |
| Supported OS     | PCL   | Windows XP, Windows Vista, Windows 7, Windows 8, Windows 8.1, Windows Server 2003, Windows Server 2008 R2, Windows Server 2012, Windows Server 2012 R2                            |  |
|                  | Adobe PostScript 3  | Windows XP, Windows Vista, Windows 7, Windows 8, Windows 8.1, Windows Server 2003, Windows Server 2008 R2, Windows Server 2012, Windows Server 2012 R2, Mac OS X 10.5.8 and later |  |
| UFR II           | Windows XP, Windows Vista, Windows 7, Windows 8, Windows 8.1, Windows Server 2003, Windows Server 2008 R2, Windows Server 2012, Windows Server 2012 R2, Mac OS X 10.5.8 and later |   |  |
| Mac PPD          | Mac OS X 10.5 - 10.9  |   |  |
| Network Protocol | TCP/IP (LPD/Raw/IPPP/IPP/FTP/WSD/SMB), IPv6, AppleTalk  |   |  |

### Send Specifications

|                          |  |  |  |
|--------------------------|--|--|--|
| Scan Speed (A4, 300 dpi) | Black & White / Colour: 55/55 ipm  |  |  |
| Scan Resolution          | 100 x 100 dpi, 150 x 150 dpi, 200 x 100 dpi, 200 x 200 dpi, 200 x 400 dpi, 300 x 300 dpi, 400 x 400 dpi, 600 x 600 dpi |  |  |
| Destinations             | Email / Internet FAX (SMTP), PC (SMB, FTP), iWDM, WebDAV   |  |  |
| Address Book             | LDAP, Local (Max. 1800)  |  |  |
| File Format              | TIFF, JPEG, PDF, XPS, High Compression PDF/XPS, PDF/A-1b, Optimize PDF for Web   |  |  |

### Optional Accessories

|  |   |  |  |
|--|---|--|--|
| <b>Universal Send Advanced Feature Set</b> |   |  |  |
| File Format                                | Outline PDF (Trace & Smooth), Searchable PDF/XPS, Reader Extensions PDF, Office Open XML for Words and PowerPoint |  |  |
| <b>Universal Send Security Feature Set</b> |   |  |  |
| File Format                                | Encrypted PDF, Device Signature PDF/XPS   |  |  |



To arrange for a demonstration, simply contact any of our offices below.

### SOUTH & SOUTHEAST ASIA REGIONAL HEADQUARTERS

#### Canon Singapore Pte. Ltd.

1 HarbourFront Avenue #04-01, Keppel Bay Tower, Singapore 098632  
Tel: +65-6799 8888 | Fax: +65-6799 8882 | www.canon-asia.com | www.canon.com.sg

### CANON SALES SUBSIDIARIES & BUSINESS PARTNERS

#### Afghanistan:

Megaplus Afghanistan Limited  
House No. 233, Street No. 4, Charagh Ali,  
Qilla-e-Fatehullah, Kabul, Afghanistan  
Tel: 93-700 228 852 / 93-700 979 511  
Fax: 93-202 201 259  
Email: info@megaplus.com.af

#### Bangladesh:

Flora Limited  
Admjee Court Annex 2 (4<sup>th</sup> Floor)  
119-120 Motijheel Commercial Area  
Dhaka 1000 Bangladesh  
Tel: 880-2-716-2742-46 / 225  
Fax: 880-2-955-0030  
www.floralimited.com

#### Brunei:

Interhouse Company  
No. 5-7 Bunut Jaya Complex  
Spg 574 Jalan Tutong BF1320  
P.O. Box 423, Seri Complex  
Bandar Seri Begawan BA 1779  
Brunei Darussalam  
Tel: 673-2-653-001  
Fax: 673-2-653-003

#### Cambodia:

Royal Cambodia Co., Ltd  
#437 Presh Monivong Blvd  
Phnom Penh  
Kingdom of Cambodia  
Tel: 855-23-428955  
Fax: 855-23-722961

#### Hong Kong:

Canon Hongkong Co. Ltd  
19F, The Metropolis Tower  
10 Metropolis Drive  
Hunghom, Hong Kong  
Tel: 852-3191-2388  
Fax: 852-2369-3800  
www.canon.com.hk

#### India:

Canon India Private Limited  
7<sup>th</sup> Floor, Tower B, Building #5  
DLF Cyber Terraces, DLF Phase-3  
Gurgaon - 122002  
Haryana, India  
Tel: 91-124-416 0000  
Fax: 91-124-416 0011  
www.canon.co.in

#### Indonesia:

PT Samafitro  
Jalan Ir. H Juanda No.8  
Jakarta 10120, Indonesia  
Tel: 62-21-345 8989  
Fax: 62-21-345 6699  
www.samafitro.co.id

#### Malaysia:

Canon Marketing (Malaysia) Sdn Bhd  
Block D, Peremb Square  
Sajjana Resort Section U2,  
40150 Shah Alam  
Selangor Darul Ehsan, Malaysia  
Tel: 60-3-7844 6200 / 7845 0055  
Fax: 60-3-7844 6196 / 6198  
www.canon.com.my

#### Maldives:

Simdi Company Pvt Ltd.  
G. Manam Building,  
2/1 Neeloafaru Magu,  
Male\* 20-129, Maldives  
Tel: 960-333 4421  
Fax: 960-333 4424

#### Myanmar:

Myanmar Golden Rock International Co., Ltd  
No. 79-D, Bo Chem Street, Pjya Road,  
6 1/2 Mile, Hlaing Township,  
Yangon, Myanmar  
Tel: 95-1-654810 to 19 (10 Lines),  
95-1-654844 to 48 (5 Lines)  
Fax: 95-1-654820  
Email: sales@migr.com.mm

#### Nepal:

International Electronics Concern (P) Ltd  
Kha 14, 1<sup>st</sup> Floor  
Haratibhawan Putalisadak  
Ramshah Path, Kathmandu, Nepal  
P.O. Box 12588  
Tel: 977-1-442 1991  
Fax: 977-1-442 1909

#### Pakistan:

Shirazi Trading Company (Pvt.) Ltd  
8<sup>th</sup> Floor, Admjee House  
I.I. Chundrigar Road  
Karachi 74000 Pakistan  
Tel: 92-21-3241 (7659), (7737) or (7746)  
Fax: 92-21-(3241 7747), (3242 0417) or  
(3242 0418)  
www.shirazitrading.com.pk



Managed Document Services



eMaintenance



uniFLOW v5.3

To integrate more capabilities into your imageRUNNER ADVANCE device, simply speak with your friendly Canon representative.

### Duplex Automatic Document Feeder - AQ1

|                          |                                       |   |
|--------------------------|---------------------------------------|---|
| Type                     | Automatic Document Feeder             |   |
| Size of Originals        | A3, B4, A4R, A4, B5R, B5, A5R, A5, B6 |   |
| Max. Number of Originals | 100 sheets (80 gsm)                   |   |
| Paper Weight             | 1-Sided Scanning:                     | 42 to 128 gsm   |
|                          | 2-Sided Scanning:                     | 50 to 128 gsm   |
| Scanning Speed (Max.)    | Copying:                              | 1-sided scanning: 30 sheets/minute (A4 in Black-and-White / Full Colour at 600 x 600 dpi) |
|                          | Scanning:                             | 1-sided scanning: 55 sheets/minute (A4 in Black-and-White / Full Colour at 300 x 300 dpi) |
| Dimensions (H x W x D)   | 139 mm x 565 mm x 525 mm              |   |
| Weight                   | Approximately 8.1 kg                  |   |

### Cassette Feeding Unit - AL1

|                        |  |  |
|------------------------|--|--|
| Paper Sizes            | A3, B4, A4, A4R, B5, B5R, A5R, FL5, F4A and Custom size (139.7 x 182 mm to 304.8 x 457.2 mm) |  |
| Paper Capacity         | 550 sheets x 2 cassettes (80 gsm)  |  |
| Power Source           | From main unit   |  |
| Dimensions (H x W x D) | 248 mm x 565 mm x 615 mm   |  |
| Weight                 | Approx. 16.1 kg  |  |

### Inner Finisher - G1

|   |   |   |
|---|---|---|
| Number of Tray                                | 2 Trays   |   |
| Paper Size                                    | A3, B4, A4, A4R, B5, B5R, A5, A5R, FL5, and Custom Size (98.4 x 139.7 mm to 320 x 457.2 mm) |   |
| Upper Tray Capacity                           | No finishing set, Collate, and Group mode   | A4: 100 sheets (or 10.4 mm in height)   |
|   | Staple Mode   | A4: 30 sets (or 52 mm in height)<br>A3, A4R: 30 sets (or 26 mm in height)       |
| Lower Tray Capacity                           | No finishing set, Collate, Group, Collate + Offset, and Group + Offset mode                 | A4: 500 sheets (or 52 mm in height)<br>A3, A4R: 250 sheets (or 26 mm in height) |
|   | Staple Mode   | A4: 30 sets (or 52 mm in height)<br>A3, A4R: 30 sets (or 26 mm in height)       |
| Max. Stapling Capacity/ Available Staple Size | Corner  | A4: 50 sheets (80 gsm)<br>A3, A4R: 30 sheets (80 gsm)                           |
|   | Staple-Free   | All sizes: 5 sheets (80 gsm)  |
| Paper Weight                                  | Staple On-demand  | All sizes: 50 sheets (80 gsm)   |
|   | Staple-Free   | All sizes: 50 sheets (80 gsm)   |

### Staple Finisher - U1/Booklet Finisher - U1

|  |   |  |
|--|---|--|
| Number of Output Tray                        | 2 Trays   |  |
| Paper Size                                   | A3, B4, A4, A4R, B5, B5R, A5, A5R, FL5, F4A and Custom Size (98.4 x 139.7 mm to 320 x 457.2 mm)   |  |
| Paper Weight                                 | 52 to 256 gsm   |  |
| Capacity Per Tray                            | No finishing set, Collate, and Group mode   | A4: 1,000 sheets (or 147 mm in height)<br>305 mm x 457 mm, 320 mm x 450 mm (SRA3), A3, A4R: 500 sheets (or 73.5 mm in height)            |
|  | Collate, Group Mode   | A4: 1,000 sheets (or 147 mm in height)<br>A3 and A4R: 500 sheets (or 73.5 mm in height)  |
| Staple Capacity                              | Staple Mode   | A4: 50 sets (or 147 mm in height)<br>A3 and A4R: 50 sets (or 73.5 mm in height)  |
|  | Staple Position   | A4: 50 sheets (80 gsm) / A3, A4R: 30 sheets (80 gsm)<br>Staple Finisher Corner, Double<br>Booklet Finisher Corner, Double, Saddle Stitch |
| Saddle Stitch (For Booklet Finisher-U1 only) | A3 and A4R: 16 sheets (80 gsm) / 10 sheets (80 gsm)   |  |
| Dimensions (H x W x D)                       | Staple Finisher-U1: 971 mm x 662 mm x 646 mm (when the extension tray is extended)<br>Booklet Finisher-U1: 971 mm x 771 mm x 657 mm (when the extension tray is extended) |  |
| Weight                                       | Approximately 40.5 kg   |  |

### Other Optional Accessories And Supplies

Platen Cover Type U, FI Cassette-AX1, FI Cassette-AY1, 3 Way Unit-D1, Staple CRG-J1, Staple CRG-D2, Staple-P1, Copy Tray-J2, Inner 2 Way Tray-J1, Reader Heater Unit-L1 230V, Utility Tray-A2, Copy Card Reader-F1, Copy Card Reader ATCH-B4, Super G3 Fax Bd-AR1, Fax BD (2 Line)-AR1, PCL Printer Kit-BB1, P5 Printer Kit-BB1, Direct Print (PDF)-H1, Direct Print (XPS)-H1, Barcode Print Kit-D1, Universal Send Advanced Feature Set-D1, Universal Send Security Feature Set-D1, Universal Send Digital User Signature Kit-C1, Web Access Software-H1, Removable HDD Kit-A1, Secure Watermark-B1, Document Scan Lock Kit-B1, Encrypted Printing Software-D1, Access Management System Kit-B1, USB Device Port-E4, HDD Encryption Kit-C9, Remote Fax Kit-A1, IR-ADV Series Pedestal C, NPG-67 Toner K/C/M/Y, NPG-67 Drum Unit

This brochure and the specifications of the product have been developed prior to the date of product launch. These specifications are subject to change without notice. Therefore no representations or warranties, either express or implied, are made of the fitness of this product for a particular purpose. In no circumstances shall the information in this brochure be considered part of our terms and conditions of sale. You are advised to check the prevailing specification immediately prior to purchase. All company and/or product names are trademarks and/or registered trademarks of their respective manufacturers in their markets and/or countries.

Canon, imageRUNNER, imageRUNNER ADVANCE, imageCHIP, RAPID Fusing System, MEAP, eMaintenance, iW, Business can be simple and get Smart get genuine are trademarks of Canon Inc. and/or its affiliates. "MEAP" is a trademark of CANON INC., referring to an "application platform" for Canon multifunction and single function printers. Other names may be the trademarks of their respective owners.

uniFLOW, eCopy and Therefore are independent party software distributed by Canon Singapore Pte. Ltd.