

2°C~8°C Pharmacy/Lab Refrigerator

New Product

Intelligent Control & Constant Temperature

Multiple Alarms Bring More Security



YC-650L

Real Air Cooling

The multi-duct vortex refrigeration system and finned evaporator can prevent frosting completely and improve temperature uniformity to a large extent.

Real Energy Saving

The refrigerator is equipped with "M + Energy Core" power management system and complete air cooling design, improving energy saving efficiency by more than 40%.

Real Visibility

The electrical heating + LOW-E design with double considerations can achieve a better anti-condensation effect for the glass door.

Real Safety

6 temperature probes can ensure high precision of temperature control with nearly no fluctuation and thus can improve safety.



Intelligent Temperature Control

- High-precision microcomputer temperature control system with built-in control/alarm sensors for High/ low temperature, ambient temperature and evaporator temperature etc. ensuring the safe and stable running.
- 1 inch high brightness digital temperature display with 0.1°C display precision; the temperature can be set freely.



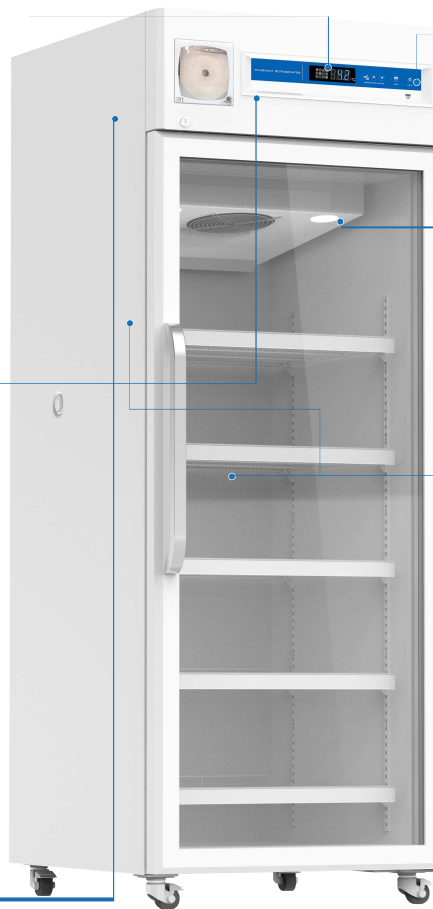
Security System

- The well-developed audible & visual alarm system with multiple audible & visual alarm functions: high temperature alarm, low temperature alarm, sensor failure alarm, door ajar alarm, power failure alarm etc;
- The turn-on delay and stopping interval protection function can ensure reliability in running;
- The door is equipped with a lock, preventing it from opening accidentally.
- Refrigerator programmed to alarm again if alarm event still existed 30mins after Mute-on, this can help avoid any unknown alarm event to happen.



Refrigeration System

Equipped with a compressor supplied by an international famous Secop brand, high-efficiency air-cooled condenser and finned evaporator, ensuring fast refrigeration.



Optional chart recorder

- This technology provides you with temperature recorders without electronics.
- No power supply is required.
- European imported brand, durable and reliable



Data Storage

- Equipped with a USB export interface, which can be used for storing data from the last month and the current month automatically in PDF format.
- When a U-disk is connected, temperature data can be stored continuously and automatically (data can be stored for more than 2 years);
- The printer is optional.



Lighting System

Equipped with lighting system with LED lights, ensuring high visibility inside the cabinet.



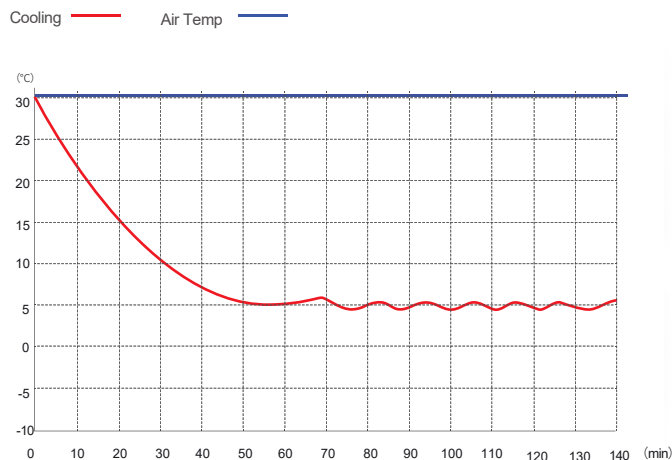
Human-oriented

- Equipped with high-quality shelves made from PVC-coated steel wire, which are easy to clean;
- Aluminum door handle, easy to open, easy to move.
- Equipped with testing port, bringing convenience to users in testing temperature inside the cabinet.

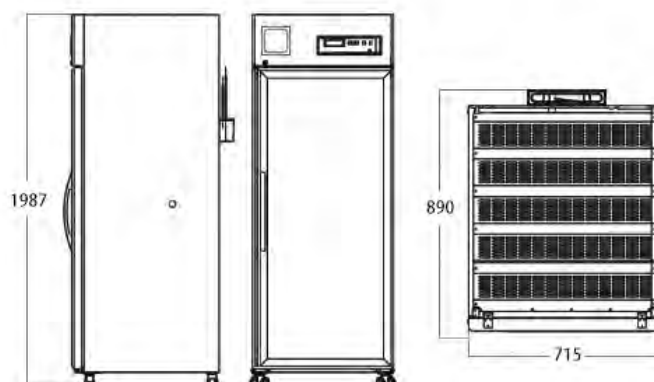
✓ Scope of Application

Suitable for storage of biological products, vaccines, drugs, reagents, etc. Suitable for use in pharmacies, pharmaceutical factories, hospitals, centers for disease prevention & control, clinics, etc.

🔗 Performance Data / Cooling Curve



📏 External Dimensions



2~8°C Pharmacy Refrigerator	
Model	YC-650L
Cabinet Type	Upright
Capacity(L)	650
Internal Size(W*D*H)mm	605*725*1515
External Size(W*D*H)mm	715*890*1985
Package Size(W*D*H)mm	773*947*2153
NW/GW(Kgs)	157
Performance	
Temperature Range	2~8°C
Ambient Temperature	16-32°C
Cooling Performance	5°C
Climate Class	N
Controller	Microprocessor
Display	Digital display
Refrigeration	
Compressor	1pc
Cooling Method	Air cooling
Defrost Mode	Automatic
Refrigerant	R290
Insulation Thickness(mm)	55
Construction	
External Material	Powder coated material
Inner Material	Aluminum plate with spraying/Stainless steel(optional)
Shelves	5(coated steel wired shelf)
Door Lock with Key	Yes
Lighting	LED
Access Port	1pc. Ø 25 mm
Casters	4 (2 casters with brake)
Data Logging/Interval/Recording Time	USB/Record every 10 minutes / 2 years
Door with heater	Yes
Alarm	
Temperature	High/Low temperature, High ambient temperature
Electrical	Power failure , Low battery
System	Sensor failure, Door ajar, Built-in datalogger USB failure, Communication failure, Condenser overheating
Electrical	
Power Supply(V/HZ)	220-240 ~ 50/60
Rated Power(W)	430
Power Consumption(KWh/24h)	4.73
Rated Current(A)	3.06
Accessory	
Standard	RS485, Remote alarm contact, Backup battery
Options	Printer, RS232, Chart Recorder

*The model, parameters and performance specified in this brochure may be changed without prior notice because of product upgrading.

*There may be differences between the product images shown in this brochure and the actual products. When you are buying any product, please check the actual product.