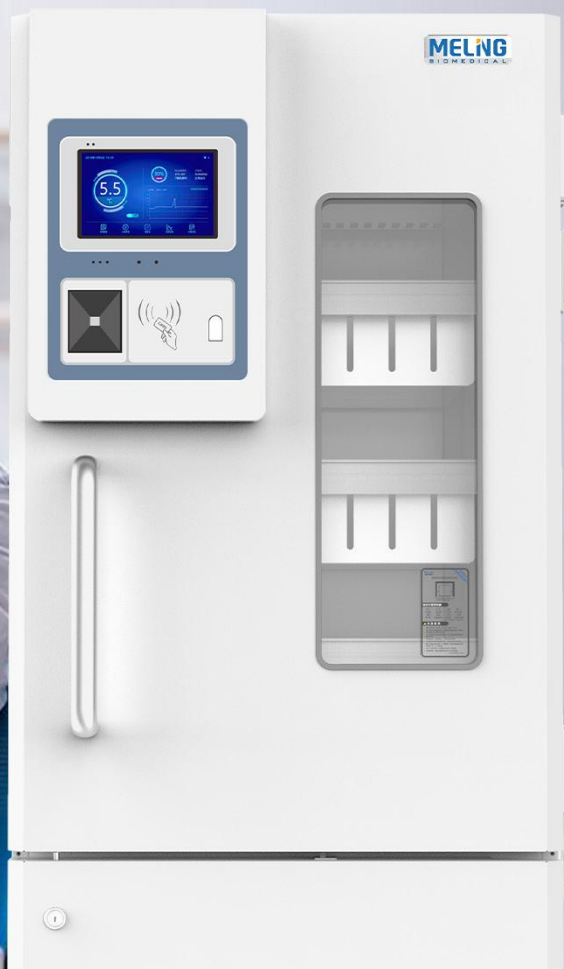
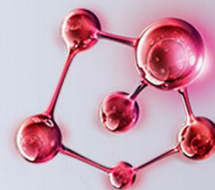


4°C Blood Bank Refrigerator

Super High Quality

Precise Temperature Control

Safeguarding Security of Blood



XC - 168L



Constant Temperature under Intelligent Control

- Return air duct design, ensuring a temperature control accuracy at 0.1°C inside the cabinet;
- High-precision microprocessor temperature control system, built-in sensors for upper/lower zone temperature, ambient temperature, evaporator temperature, and operation control, ensuring safe and stable operation.



Security System

Perfect audible and visual alarm system comes with alarm functions for high temperature, low temperature, sensor failure, door ajar, and power failure.



High-efficiency Refrigeration

- Advanced air cooling design, precision temperature control, safeguarding security of blood
- Stainless steel inner container, finned evaporator, powerful refrigeration



Precise Temperature Control

7-inch HD intelligent display touch screen, user-friendly interface and more accurate temperature control, with Bluetooth, Wi-Fi and other functions, more convenient operation and more comprehensive functions;



Refrigeration System

- Equipped with brand high-efficient compressor, EBM fan motor, performing efficient energy and quiet.
- High-precision microprocessor temperature control system, built-in sensors for upper/lower zone temperature, ambient temperature, evaporator temperature, and operation control, ensuring safe and stable operation.



Multiple security protection

- Equipped with power management module, optimized energy saving;
- High-precision voltage control, stabilizing the voltage and refrigerator performance
- Reduce the redundancy heat, completely eradicate overheating risk



Automatic Defrost

- Return air duct design, ensuring a temperature control precision within 2~6°C inside the cabinet;
- Equipped with automatic defrost function, force defrost;
- Optional magnet inner door.



Alarm System

- Perfect audible and visual alarm system comes with alarm function for high temperature, low temperature, sensor failure, door ajar, and power failure etc.



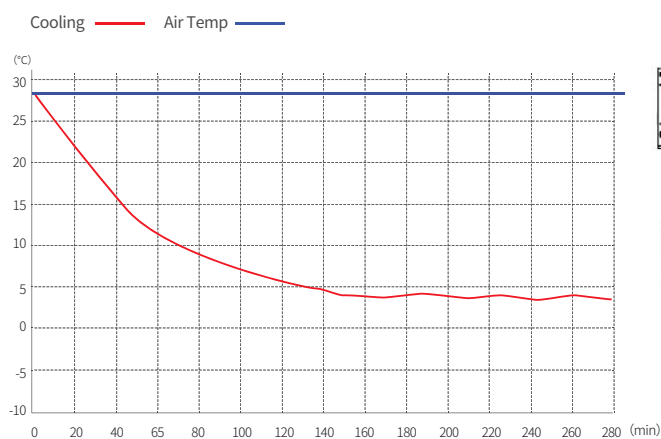
Human-oriented

- Equipped with 3 stainless steel drawers;
- Up to 117 bags of 400ml blood bags and 99 bags of 450ml blood bags can be loaded.

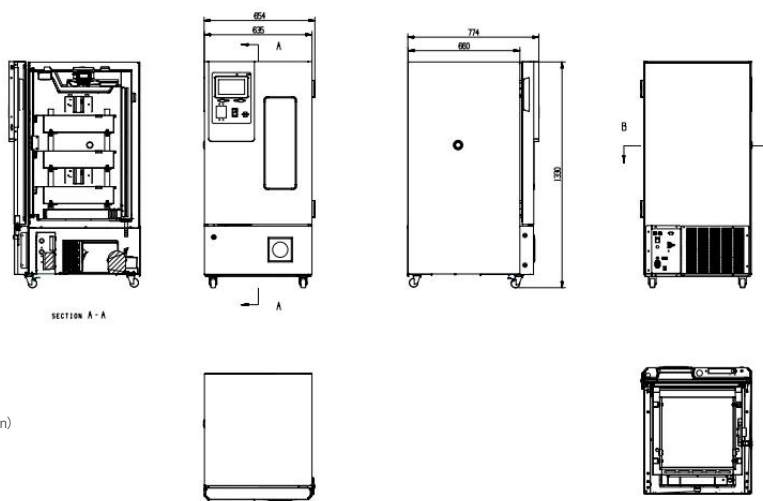
Scope of Application

Suitable for use in blood banks, hospitals, health and disease prevention systems, research institutions, colleges & universities, the electronic industry, biological engineering, laboratories in colleges & universities, military enterprises, deep-sea fishing companies, etc.

Performance Data / Cooling Curve



External Dimensions



| 4°C Blood Bank Refrigerator | |
|--------------------------------------|---|
| Model | XC-168L |
| Cabinet Type | Upright |
| Capacity(L) | 168 |
| Internal Size(W*D*H)mm | 525*550*744 |
| External Size(W*D*H)mm | 654*774*1330 |
| Package Size(W*D*H)mm | 700*837*1492 |
| NW/GW(Kgs) | 116/144 |
| Performance | |
| Temperature Setting | 2~6°C |
| Ambient Temperature | 16-32°C |
| Climate Class | N |
| Controller | Microprocessor |
| Display | HD intelligent touch screen |
| Refrigeration | |
| Compressor | 1pc |
| Cooling Method | Air cooling |
| Defrost Mode | Automatic |
| Refrigerant | R290 |
| Insulation Thickness(mm) | R/L:55,U:55,D:55,B:50 |
| Construction | |
| External Material | PCM |
| Inner Material | Stainless steel |
| Drawers | 3(Stainless steel drawers) |
| Door Lock with key | Yes |
| Access Port | 1pc. Ø 25 mm |
| Casters | 4 (2 casters with brakes) |
| Data Logging/Interval/Recording Time | USB/Record every 5 minutes / 10 years |
| Backup Battery | Yes |
| Alarm | |
| Temperature | High/Low temperature,High ambient temperature |
| Electrical | Power failure , Low battery |
| System | Sensor failure, Door ajar, Condenser overheating, Communication error |
| Electrical | |
| Power Supply(V/HZ) | 220-240V~/50~60 |
| Accessories | |
| Options | Chart recorder |
| Standard | Remote alarm contact, RS485 |

*The model, parameters and performance specified in this brochure may be changed without prior notice because of product upgrading.

*There may be differences between the product images shown in this brochure and the actual products. When you are buying any product, please check the actual product.