

DELL ALIENWARE M15 R3-CT01 BLACK

Product Specification

Intel Core i7 10750H 2.60 Ghz, 16GB RAM, 1TB SSD , 15.6" Full HD 300Hz, 8GB NVIDIA Geforce RTX 2070, Wireless, Bluetooth, Camera, Windows 10 Home, English Keyboard,

1 Year DELL Warranty

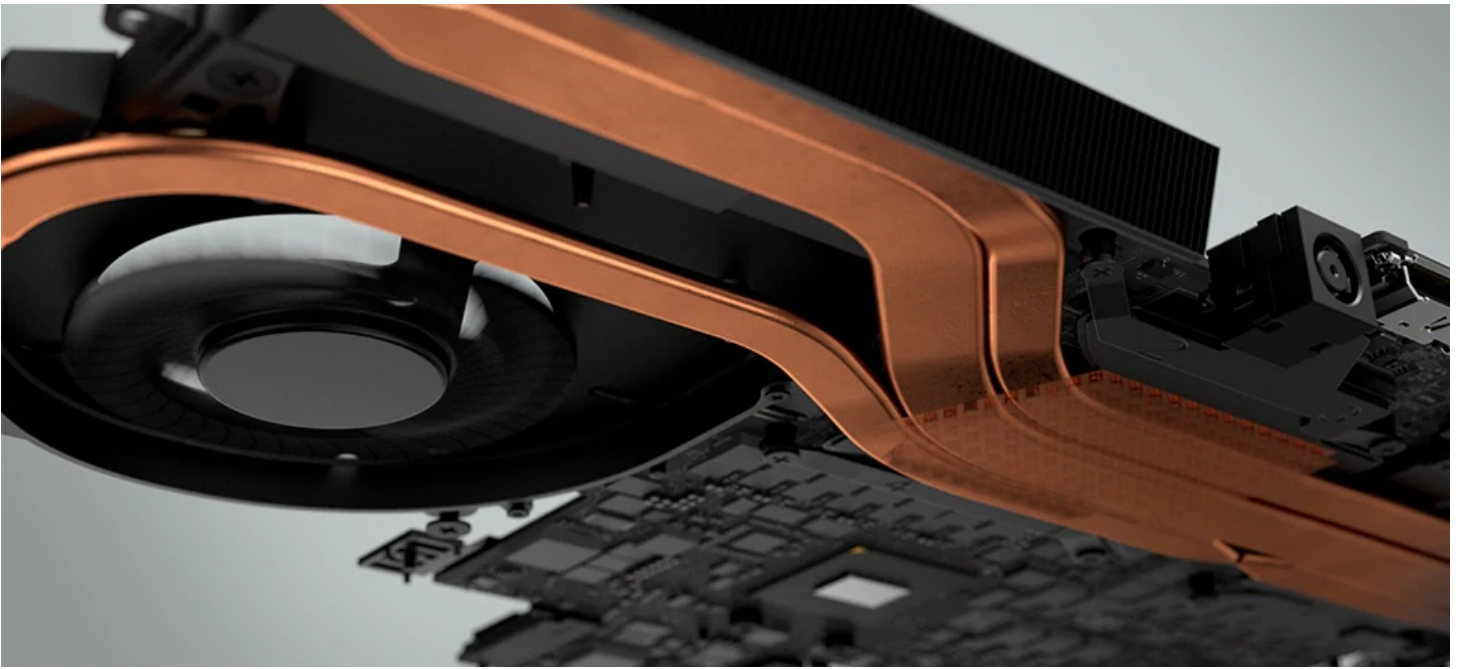
Features of Alienware M15 Series

Please Note : The features mentioned below may vary for the model across the region. Please refer Product specifications above for the Processor, Storage, Graphics, etc in the specific model.



A NEW LEGEND IS BORN

Weighing in as low as 4.65 lbs., under 20.5mm thin, 360.3mm wide and 276.2mm long, the new Alienware m15 is lean and powerful. Designed from the ground up, the m15 features premium magnesium alloy materials that deliver weight savings while reducing thickness and delivering a stiffer, sturdy, chassis - all within a sleek aesthetic. This generation of the Alienware m15 includes an improved surface coating engineered to reduce fingerprint smearing and other typical stains without changing the hue or color. This stain resistant solution is a High Performance Clear Coat – a formula that lets you feel the cold and durable magnesium-alloy within our award-winning high-contrast color strategy. Available in Lunar Light or Dark Side of the Moon.



ADVANCED ALIENWARE CRYO-TECH

Our latest thermal technology, Advanced Alienware Cryo-Tech, is an engineering approach where an Alienware system's gaming performance is never compromised by means of electrical and mechanical methods while maintaining system stability during the highest performance states. This is managed using methods, not limited to, heat dissipation through creative thermal module designs, fan and fan motor design, as well as exhaust and intake layouts and overall airflow impedance. This generation has also been upgraded with an 9mm diameter increase in the CPU fan blades and 4mm diameter increase in the GPU fan blades. In addition, the new m15 offers improved airflow by directly channeling the cooler air onto the most sensitive cores of the system.

With all the latest engineering enhancements, you can expect increased power efficiency and higher speeds for longer sustained periods. Here's a closer look at our innovative cooling solution:

Vapor Chamber Technology: Alienware's new Vapor Chamber Technology uses advanced methods to efficiently dissipate heat. The new Alienware m15 is engineered with a dedicated vapor chamber in between the CPU and copper heat pipes. It's all designed to manage the thermal flow and maximize performance. These chambers utilize the phase-changing nature of liquid to transfer heat more effectively than a solid piece of metal or copper heat pipes. Vapor Chambers are also more versatile than copper heat pipes in that they can be designed to be spread evenly across an entire chip that needs to be cooled.

Dual-intake, dual-exhaust airflow design: Our thin and light chassis prioritizes performance with a dual fan design that pulls in cool air from the top and bottom vents, and exhales exhaust out the rear and side vents for optimal cooling of the core components.

High voltage driving fan: The fire resistant, Kevlar-like liquid-crystal polymer fan blades include sleeve bearings, and 3-phase fan control to create less friction and circulate air more efficiently. There are now 132 unique fan blades to cool both the CPU and GPU.

Load-balancing heat pipes: The dynamics of thermal activity across critical components like the GPU and the CPU are intelligently discharged across four 3.5mm diameter copper-composite heat pipes.

Dense copper fin stacks: The new m15 has the greatest amount of copper material, by weight, dedicated to

providing heat dissipation to core components than on any previous m15. The new m15 has also increased the size of its heat pipes by 40% to increase overall surface area and heat dissipation.

HYPEREFFICIENT VOLTAGE REGULATION

Hyper-Efficient Voltage Regulation is the result of hardware engineering that enables graphics and/or processors to run at their highest levels of performance for extended lengths of time. This increases the number of total voltage regulation phases which thereby raises power signal efficiency and thermal efficiency per core.

The higher efficiency level results in capacity for increased workloads over time with reduced energy loss to heat.

The graphics story: An industry first, the m15 features unparalleled 12-phase graphics voltage regulation on configurations featuring the NVIDIA GeForce GTX 1660 Ti or higher to enable the highest performance possible for the longest time ever possible. Offering a 50% increase in voltage regulation phases to create our most efficient 15" design in Alienware history. For AMD Radeon graphics fans we are debuting the AMD Radeon™ RX 5500M graphics option to the Alienware m15 and featuring 10-phase graphics voltage regulation architecture - an Alienware exclusive.

The processor story: Achieve up to 6-phase voltage regulation on configurations with a NVIDIA GeForce graphics card for higher performance gaming for longer periods of time. And with 25% larger CPU inductors, top-end performance is increased even further. Configurations based on any other graphics options will be based on 4-phase graphics voltage regulation and 4-phase processor voltage regulation.



UNPARALLELED DISPLAY TECHNOLOGIES

The new Alienware m15 offers incredible display options and the thinnest left and right bezels (5.6mm) among all Alienware gaming laptops for gamers who demand the best visual experiences possible.

Rapid refresh rate: For gamers who prioritize blazing-fast, uninterrupted gaming, the Alienware m15 offers 300Hz and base 144Hz panel options that are now twice as fast as the previous generation. The 300Hz panel includes sRGB 100% color gamut, 1000:1 contrast ratio, 300-nit brightness, and 3ms response time. The 144Hz panel includes a 72% NTSC color gamut, 800:1 contrast ratio, 300-nit brightness, and 7ms response time.

Superior visuals: An OLED 4K UHD display option beyond the standard 100% color gamut features 1ms response time, 100,000:1 contrast ratio, 60Hz refresh rate and 400-nit brightness so gamers can get lost in vivid, lifelike visuals and pulse-racing gameplay. Combining the ultra-high definition of our 4K display with the high contrast and wide color gamut of OLED, gamers will be able experience what visuals without compromise looks like.

Reduced blue light emissions: The laptop reduces blue light rays with a unique technology that lowers the exposure to high-energy visible light to keep you deep in the game without reducing image quality. Available on the OLED panel.

Bring the game to life: With the OLED panel, you can experience a new True Black HDR 500 rating with a DCI-

P3 color gamut during every moment of the game. With over 8,000,000 individually managed pixels the most chaotic moments on the battlefield feel crisp and responsive with its 1ms response time. And with uniform lighting on each light diode, panel edge bleeding is as absent as your opponent's win streak.

ADVANCED EYE TRACKING

Next-gen Tobii eye tracking adds a completely new form of immersion to your game. Smaller sensors with wake capabilities enable features and sensitivity to track head pose, presence, fine gaze and eye position. Available on the OLED panel option with NVIDIA graphics only.

Enhanced interactions: UI elements fade when not making eye contact so you can get deeper into the game. Characters know when you're looking at them and will respond accordingly.

New tracking tools: Learn, train and improve using eye tracking-enabled tools designed to measure your mini map awareness and help you learn when to pay attention to the clock.

Software support: Show viewers where you're looking while streaming your favorite game. Tobii Ghost software supports all major streaming platforms and software.

Twitch-ready: Toggle between visualizations like heatmaps, shadow, and spotlight using our extension. You no longer need to move your mouse to show viewers what you're talking about, just glance at it.

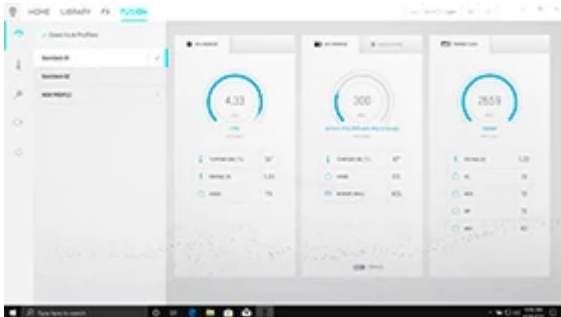
ALIENWARE COMMAND CENTER

The Alienware Command Center is continuously updated. Our latest version now includes features specifically desired by the gaming community with auto-tuned game profiles, a new responsive UI, intuitive overclocking options and all-new AlienFX settings.



CREATIVE CONTROL

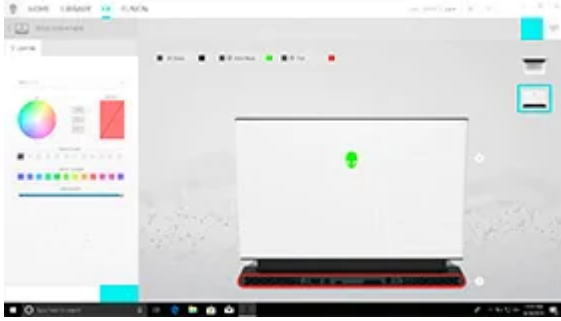
Create profiles designated for power, thermal management, sound, lighting, macros, and more. Link a profile to a game and its settings will automatically apply whenever the game is launched, no matter where it's launched from.



OPTIMAL OVERCLOCKING

The new Alienware Command Center includes an easy and intuitive overclocking control module that allows the user to quickly and safely squeeze additional performance out of their system.

Create your own system overclocking profiles, then easily control their system performance.



ENHANCED ALIENFX

The latest AlienFX hardware and software supports full RGB values with up to 16.8 million colors.

Easily manage your FX lighting zones, edit peripheral settings and save new themes you can then assign for each game.

PORTS & SLOTS

1. SD Card Reader | 2. (2x) SuperSpeed USB 3.1 Gen 1 Type-A | 3. HDMI 2.0b with HDCP 2.2 Output | 4. Mini-Display Port 1.4 Output | 5. Thunderbolt™ 3 Port | 6. Alienware Graphics Amplifier Port | 7. Power/DC-In Port | 8. Noble Lock port (cable and lock sold separately) | 9. Killer™ Networks E3000 Gigabit Ethernet NIC | 10. USB 3.1 Gen 1 Type-A with Powershare Technology | 11. Audio Out 1/8" Port (Compatible with inline mic headset)